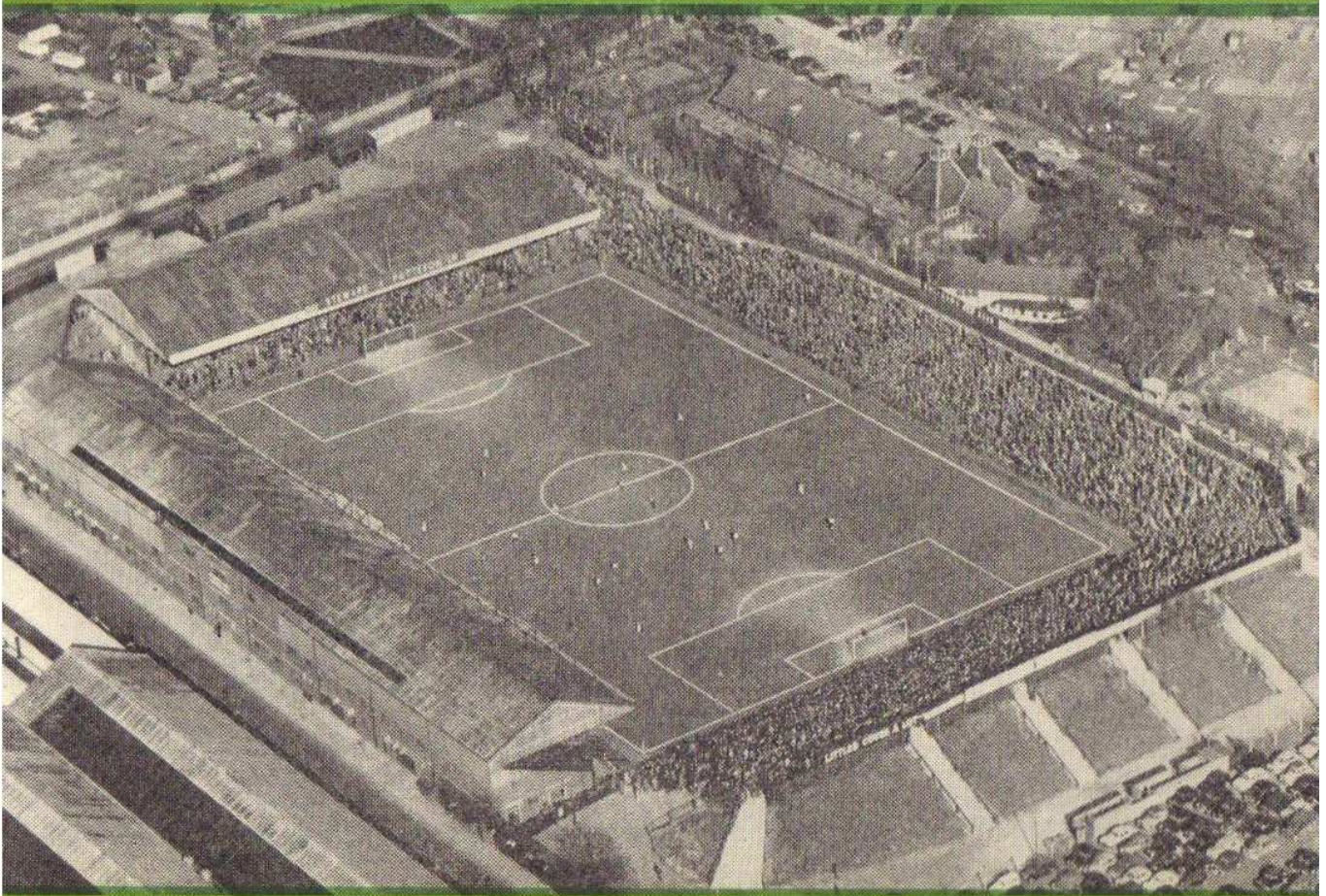




# NORWICH CITY FOOTBALL CLUB



FOOTBALL LEAGUE (Third Division South)

*SATURDAY, 10th NOVEMBER, 1956*

## Norwich City v. Swindon Town

PRICE **4d.** EACH

Nº 2775



**CHADDS**

D. L. WEBB (Norwich) LTD.

*TAILORS AND OUTFITTERS*

23 BEDFORD STREET  
NORWICH

Telephone 22668

“Clothing for every occasion”



**Steward &  
Patteson**

Limited

POCKTHORPE BREWERY  
— NORWICH —

*Celebrated*

**BOTTLED BEERS**

*on sale in the Refreshment Bars on the  
Ground (as licensed)*

•  
**NORFOLK NIPS & MIDGET STOUT**  
*. . . . for the Cold Weather . . . .*

REGISTERED  
PLUMBERS

**W. J. TAYLOR**

**SANITARY AND HEATING ENGINEER  
28 ESSEX STREET - NORWICH**

Telephone : 24207/8

BRANCHES :

49-51 Fore Street, Ipswich. Tel. : 2727

St. Peter's Plain, Yarmouth. Tel : 2598

Member of  
Association Heating  
Ventilating  
Domestic Employers



# NORWICH CITY FOOTBALL CLUB

*President:* THE HON. MRS. E. BARCLAY

*Vice-President:* R. G. PILCH

*Directors:*

JAMES L. HANLY (*Chairman*), A. R. HURN (*Vice-Chairman*),

D. W. P. GOUGH, C. T. JOICE, G. E. PILCH, H. G. SANDS,

E. C. PAGE, A. J. KIRCHEN

*Secretary-Manager:* T. R. PARKER

*Financial Secretary:* P. W. DASH

*Ground:* CARROW ROAD

(*Telephone:* 21514)

---

## Programme Notes

Last Saturday at Gillingham we gave another much improved performance, and although we lost Matt McNeil with a badly cut knee half way through the second half, we held on to our one goal lead until the extra time added on for injuries when we were extremely unlucky to cede the equalising goal. In addition to McNeil, Ray Kitchener and Arthur Stenner are also on the injured list, whilst lack of news from Billy Coxon rather suggests that he may be overseas by now.

Pride of place goes to our youth team—under 18 on the 1st September is the qualifying age—who were very unlucky to have lost 4—3 to a strong Tottenham Hotspur side in the second round of the F.A. Youth Cup at Cheshunt. This side is shaping very well, and we hope that as far as possible they will be kept together for the remainder of the season.

This afternoon we welcome the members of Swindon Town to Carrow Road. This is the first match that we have tried partly by floodlight, and we hope that the later kick-off will prove of benefit to our Supporters.

Next Saturday we entertain Bedford Town in the 1st Round of the F.A. Challenge Cup. Floodlights will again be used for the second half of the match, the kick-off being at 3 p.m.

Tickets are now on sale at the Main Office, and normal first team prices—Block A 6/—, Blocks B and C 4/9, and Block D 4/—, apply. **SEASON TICKET HOLDERS HAVE THE OPTION TO CLAIM THEIR SEATS UNTIL THURSDAY NEXT, 22nd NOVEMBER.**

---

## FORTHCOMING MATCHES

### CARROW ROAD

**Saturday, 17th November—**

**BEDFORD TOWN; kick off 3 p.m.**

**Saturday, 24th November—**

**ALDERSHOT; kick-off 3 p.m.**



---

## WELCOME TO OUR VISITORS FROM SWINDON

A sincere greeting from Management and Staff of

# The Gaumont Restaurant

Situated at the Haymarket in the very centre of Norwich

**FULLY LICENSED — Open 11 a.m.—10 p.m.**

---

**COFFEE      LUNCHEON      TEA      HIGH TEA      DINNER      SNACKS**

---

LUNCHEON *before*, and TEA *after the match at the GAUMONT RESTAURANT, will complete your day*

---

## OUR VISITORS TO-DAY

Swindon Town, after finishing at the foot of the league last season, are again struggling to improve their position. To date they have obtained 7 points from 10 home games and 5 points from 8 matches played away. The results of their fixtures are as follows:—

Home: Won—Ipswich (3—1), Queen's Park Rangers (1—0), Southend (3—2).  
Drawn—Coventry (2—2).

Lost—Aldershot (1—2), Brentford (1—3), Shrewsbury (1—2),  
Gillingham (2—3), Torquay (1—2), Exeter (3—5).

Away: Won—Watford (4—3), Walsall (2—1).

Drawn—Crystal Palace (0—0).

Lost—Brentford (1—4), Gillingham (0—3), Bournemouth (0—7).  
Queen's Park Rangers (0—3), Southampton (1—2).

As the above results show, Swindon's principal weakness has been in the defence, and to strengthen this two signings have recently been made. Vincent Jack, a 6 ft 4 in. centre half has been secured from Bury, and Stan Earl, a full back, from Leyton Orient. The latter player was Orient's regular first team man at the start of this season and he had been with the club since 1953, following four years with Portsmouth.

Among other transfers to Swindon are R. Chandler, goalkeeper, from Bristol Rovers; J. Miller, outside left, Hamilton; and F. Whyte, centre forward from Celtic.

Swindon are an old and respected club in Association football, and down the years many great matches have been played between them and the City, particularly in the days at The Nest.

In the last six seasons at Carrow Road, however, their record is not impressive. They drew in 1952-53 and 1953-54, but have been defeated on the other four visits: last season the result was 4—1 in City's favour.

W.J.P.

---

**ATTENTION!—Ours is personal . . .**

Consult **THE SPORTS SPECIALISTS**

## Tom Stevenson (Sports) Ltd.

for all your Sports Requisites

We are sole agents for the "Minerva" Football (as used by Norwich City F.C.)

Only address .

**SWAN LANE, off LONDON STREET, NORWICH (Tel. Norwich 26413)**

---



Who Holds the Speed  
"Record" for Air, Land  
and Water **?**

WE hold "RECORD" STOCKS of all  
speeds (78—33½—45 R.P.M.) AND ALL  
MAKES

Also everything in Music—Sheet, Instruments,  
Players, etc. Call, write or phone 26414

**W. E. WILLSON'S MUSIC BAZAAR LTD.**  
24 White Lion Street (Next the steps)  
Norwich

Try us first—it's the Personal attention that counts

BEFORE AND AFTER THE  
MATCH CALL AT THE

## Foundry Bridge Kiosk

Prop. : MRS. E. WRIGHT

(Outside Thorpe Station)

For your Newspapers, Magazines,  
Cigarettes, Tobacco, etc.

## TWENTY-FOUR YEARS AGO

On 12th November, 1932, Norwich City drew 1—1 at Luton to complete eleven Third Division matches without defeat—a run that had lasted since the third game of the season. Their progress had taken them to third place in the table, and although their 18 points left them eight behind Brentford (Reading were second with 19), there was sufficient enthusiasm among Supporters for a local writer to comment on the "ridiculous" attitude of some people who were putting around the story that City "didn't want promotion."

In the four matches up to 12th November, City had certainly produced promotion form. They had beaten Swindon (5—2) and Newport (3—1) at the Nest and had shared two goals at Bournemouth and Luton.

With success had come a more settled team. Tom Scott obviously had come to stay—against Swindon he became the first City player that season to net three times—and the only changes, which were enforced, were at outside right, where Bell once displaced Ramsay (who moved to centre forward) and inside left, where Blakemore gave way, in the latter matches, to Bell.

Leading the way as the Canaries' marksman in chief was centre forward Ken Burditt, whose goal at Luton took his total for the season to 12. He and Blakemore added to Scott's three against Swindon; Scott scored at Bournemouth; Burditt (2) and Blakemore against Newport.

City Reserves, too, were making excellent progress, and at this period the barometer was "set fair," though one or two nasty shocks were in store. When the F.A. Cup draw gave the club a visit to Southern League Folkestone, it looked as if here, too, fortunes were due to prosper. But more of that anon.

*(continued on next page)*

AFTER THE MATCH VISIT THE



# ORFORD ARMS

(HOST—GEORGE C. DOE)

MUSIC EVERY EVENING

**BULLARDS BEERS WINES AND SPIRITS**



---

NORFOLK AND SUFFOLK

## Hospitals Contributors' Association

Offers all the following benefits to you for a contribution of 3d. per week :

Cash grant whilst in Hospital. Maternity, Optical, Dental and Surgical Appliance grants.  
Free Convalescent Home treatment. Loan of sick room equipment.

Membership through business groups, or as individual subscriber.

Separate scheme for grants towards the cost of Treatment in Hospital  
Private Wards and Nursing Home

Full particulars on application to Central Office, No. 38, St. Giles Street, Norwich

---

The non-League clubs in Norfolk and Suffolk lost interest in the F.A. Cup when C.E.Y.M.S. were beaten in the third qualifying round by Harwich and Parkeston. A Deacon penalty earned Church the right to a replay, and they were somewhat unlucky at Harwich, where they were beaten 5—3.

Church retained an interest in the F.A. Amateur Cup, however, by beating Cromer 2—0, and they were joined in the next round by Boulton & Paul (2—1 winners over St. Barnabas), Ipswich, who won 3—0 at Kirkley, and Stowmarket, who beat Bury 4—2.

While Brentford were racing away in the Third Division (South), Arsenal, Stoke and Chester all had a clear lead at the head of the other divisions of the league, Arsenal's progress being marked by an 8—2 home win over Leicester and a 7—1 victory at Wolverhampton in successive weeks.

## SPORTS QUIZ

1. Third South teams won 27 Cup matches last season. How many of them were won away—6, 12 or 18?
2. Whose Olympic football team was beaten by South Korea last week?
3. Which Third South team has conceded only 4 goals in 9 home matches?
4. Why did 14-year-old Alexander Davies cause a sensation recently?
5. In which country was a record recently established with 95,000 spectators at a league match?
6. How many races has Crudwell won for his present owner?
7. Which Third South teams reached Round 4 last season?
8. Which manager recently proposed Friday night Cup and League matches?

*(The answers will be found on page 13)*

---

## FISH AND CHIPS . . .

. . . the way you like them!

OUR SUCCESS COMES FROM DOING A  
COMMON JOB, UNCOMMONLY WELL

## MARCANTONIO

(OFF PRINCE OF WALES ROAD) NORWICH

---



# NORWICH CITY FOOTBALL SUPPORTERS' CLUB

(Registered under "The Small Lotteries and Gaming Act, 1956")

Headquarters: Norwich Industrial Club, Oak Street, Norwich

Our Children's Christmas Party this year will be held on Saturday, 29th December, at 3 p.m., at the Industrial Club. After tea the children will be entertained to a Punch and Judy Show, Magic and Ventriloquism, and will each receive a present off the Christmas Tree. All children of members between the ages of 3 and 11 are invited. To assist the Secretary will parents please forward the children's Christian names and ages by 16th November. No names will be entertained after that date.

---

## CHILDREN'S CHRISTMAS PARTY.

NAME.....

AGE.....

NAME.....

AGE.....

ADDRESS.....  
.....

**This must be returned to the Secretary by 16th November.**

---

# JOIN THE SUPPORTERS' CLUB NOW!



# POINTER

- ★ CIVIL ENGINEERING CONTRACTORS
- ★ PLANT HIRE SPECIALISTS
- ★ EXTENSIVE MODERN TRANSPORT FLEET

HEAD OFFICE—5, GUARDIAN ROAD, NORWICH

## RAIL EXCURSIONS

SUNDAY, 25th NOVEMBER

<b>Ipswich</b>	-	<b>7/-</b>
<b>Colchester</b>	-	<b>8/9</b>
<b>Chelmsford</b>	-	<b>11/9</b>
<b>Shenfield</b>	-	<b>13/-</b>
<b>Romford</b>	-	<b>14/-</b>
<b>Ilford</b>	-	<b>14/9</b>
<b>London</b>	-	<b>15/9</b>

(BUFFET CAR)

NORWICH (THORPE) depart 9.30 a.m.

Full details from Stations, Offices and  
Travel Agencies



Norwich City [Yellow Shirts, Green Collar

- [1] Oxford
- [2] McCrohan
- [4] Rule
- [5] Billing
- [7] Gavin
- [8] Buchanan
- [9] Hunt

Referee

Mr. H. J. Husband  
London



- [11] Darcy
- [10] Edwards
- [9] Over
- [6] Pembley
- [5] ...
- [3] Earl
- [1] Chandle

Swindon Town [Red Shirts, White Knickers

THE NEWARK CAMERONIANS TRIPLE-CH  
the match and during the interval

## Norwich Surgical Stores

JOCK STRAPS  
SURGICAL GOODS  
AND APPLIANCES

55 PRINCE OF WALES ROAD

Telephone: 20613

36 MAGDALEN STREET

Telephone: 26080

## ROOTES MAIL

- ★ HUMBER COMMER
- HILLMAN KARRIER
- SUNBEAM

## NORWICH MOTORS

PRINCE OF WALES ROAD, NORWICH



# POINTER

- ★ WASHED AND PROCESSED AGGREGATES
- ★ CONCRETE AND BREEZE WALL BLOCKS
- ★ PRECAST CONCRETE KERBS AND CHANNELS

**NORWICH**      **Telephones Norwich 24104-5-6-7-8**

Collar and Cuffs, Black Knickers]

Oxford

[3] Lockwood

Billington

[6] Ashman

Hunt R.

[10] Gordon

[11] Kitchener



Linesmen

Mr. J. R. S. Henham  
*Red Flag*

Mr. D. E. Roach  
*Yellow Flag*

[9] Owen

[8] Richards

[7] Gibson

[5] Jack

[4] Cross

[2] Hunt G.

andler

knickers]

**Kick-off 3.15**

LE-CHAMPION BAND will perform before  
A collection will be taken

## Samson and Hercules

### DANCING

THURSDAYS and SATURDAYS

WEDDING RECEPTIONS

ANNUAL DINNERS

Private Rooms Available for functions  
of all kinds

## R. G. Pilch Ltd.

SPORTS SPECIALISTS

EQUIPMENT, CLOTHING and  
FOOTWEAR for EVERY  
SPORT

★ LISTS FREE

1 BRIGG STREET, NORWICH

Tel.: 28224

## MAIN DEALERS

- ★ 24 HOUR SERVICE  
for  
PETROL, BREAKDOWNS  
and  
GARAGING FACILITIES

## MOTOR Co. LTD.

NORWICH

Telephone 28811

LTD., 30-34 BOTOLPH ST., NORWICH

FOLLOW THE GAME AGAIN  
in the

**EMPIRE NEWS**

AND

*Sunday Chronicle*

SUNDAY'S LIVELIEST SPORTS PAGES



## "WHAT'S ON"

### CARLTON

- Sunday, 11th November.** "HIGH VERMILION" (A)—Edmond O'Brien, Yvonne De Carlo. Colour by Technicolor.  
"COUNTERSPY" (U)—Dermot Walsh, Hazel Court.
- Monday, 12th November.** "ATTACK" (A)—Jack Palance, Eddie Albert.  
"FIVE STEPS TO DANGER" (A)—Sterling Hayden, Ruth Roman.

### GAUMONT

- Sunday, 11th November.** "ALL MY SONS" (A)—Edward G. Robinson, Burt Lancaster.  
"THE FLOATING DUTCHMAN" (A)—Dermot Walsh, Sidney Tafler.
- Monday, 12th November.** "A HILL IN KOREA" (A)—George Baker, Stanley Baker, Michael Medwin, Harry Andrews.  
"RAISING A RIOT" (U)—Kenneth Moore, Mandy Miller. Colour by Technicolor.

### ODEON

- Sunday, 11th November.** "AMBUSH" (U)—Robert Taylor.  
"THREE STEPS NORTH" (A)—Lloyd Bridges.
- Monday, 12th November.** "ATTACK" (A)—Jack Palance, Eddie Albert.  
"FIVE STEPS TO DANGER" (U)—Sterling Hayden, Ruth Roman.

### REGENT

- Sunday, 11th November.** "THE ONE-PIECE BATHING SUIT" (U)—Esther Williams, Victore Mature. Technicolor.  
"THE CASE OF EXPRESS DELIVERY" (A)—Donald Houston.
- Monday, 12th November.** "THE BURNING HILLS" (U)—Tab Hunter, Natalie Wood. CinemaScope. WarnerColor.  
"PLEASE MURDER ME" (A)—Angela Lansbury, Raymond Burr.

### NEW THEATRE ROYAL

- Monday, 12th November to Sunday, 18th November.** "BUS STOP" (U)—Marilyn Monroe and Don Murray. Eastman Colour. CinemaScope.

### St. GEORGE & DRAGON

Proprietor  
FRED SELF

HAYMARKET — NORWICH

TEL.: NORWICH 27714

COMMERCIAL ACCOMMODATION  
MORGANS ALES & STOUT

A MATCH FOR ANY FIRM

**WELLES TAXIS**  
**WELLES SELF DRIVE**  
NEW AUSTINS NEW VAUXHALLS

Local and Long Distance  
FURNITURE REMOVERS

A. C. Wells (Norwich) Ltd.  
85 Chapel Field Road Tel.:  
Norwich 26201-2



### THIRD DIVISION (South)

Aug. 18	Crystal Palace	h.	1—0
22	Exeter City	a.	0—0
25	Southend United	a.	0—0
29	Exeter City	h.	1—0
Sept. 1	Northampton	h.	2—1
5	Coventry City	h.	3—0
8	Queen's Park R.	a.	1—3
10	Coventry City	a.	2—3
15	Plymouth Argyle	h.	3—0
22	Reading	a.	1—2
29	Newport County	h.	1—1
Oct. 3	Southampton	a.	0—2
6	Bournemouth	a.	1—1
13	Torquay United	h.	1—2
20	Millwall	a.	1—5
27	Brighton & Hove A.	h.	1—1
Nov. 3	Gillingham	a.	1—1
10	Swindon Town	h.	
17	(1)		
24	Aldershot	h.	
28	Southampton	h.	
Dec. 1	Watford	a.	
8	(2)		
15	Crystal Palace	a.	
22	Southend Utd.	h.	
25	Colchester Utd.	a.	
26	Colchester Utd.	h.	
29	Northampton	a.	
Jan. 5	(3) Walsall	h.	
12	Queen's Park R.	h.	
19	Plymouth Argyle	a.	
26	(4) Walsall	a.	
Feb. 2	Reading	h.	
9	Newport County	a.	
16	(5) Bournemouth	h.	
23	Torquay Utd.	a.	
Mar. 2	(6) Millwall	h.	
9	Shrewsbury	a.	
16	Gillingham	h.	
23	(S.F.) Swindon	a.	
30	Brentford	h.	
Apl. 6	Aldershot	a.	
13	Watford	h.	
19	Ipswich Town	h.	
20	Brighton & Hove A.	a.	
22	Ipswich Town	a.	
27	Brentford	a.	
May 1	Shrewsbury	h.	
4	(Final)		

### FOOTBALL COMBINATION

Aug. 18	Crystal Palace	a.	1—2
22	Swindon Town	h.	1—0
25	West Ham United	h.	0—1
Sept. 1	Tottenham	a.	1—3
5	Swindon Town	a.	1—2
8	Southend Utd.	h.	2—1
15	Queen's Park R.	a.	1—2
22	Fulham	h.	1—1
29	Northampton	a.	2—2
Oct. 6	Millwall	h.	2—3
13	Birmingham	a.	2—1
20	Aldershot	h.	1—2
27	Arsenal	a.	1—2
Nov. 3	Watford	h.	1—0
10	Brighton & Hove A.	a.	
17	Brentford	h.	
24	Chelsea	a.	
Dec. 1	Ipswich Town	h.	
8	Leicester City	a.	
15	Crystal Palace	h.	
22	West Ham Utd.	a.	
25	Charlton Ath.	h.	
26	Charlton Ath.	a.	
29	Tottenham	h.	
Jan. 5	Leyton Orient	a.	
12	Southend Utd.	a.	
19	Queen's Park R.	h.	
26	Leyton Orient	h.	
Feb. 2	Fulham	a.	
9	Northampton	h.	
16	Millwall	a.	
23	Birmingham	h.	
Mar. 2	Aldershot	a.	
9	Arsenal	h.	
16	Watford	a.	
23	Brighton & Hove A.	h.	
30	Brentford	a.	
Apl. 6	Chelsea	h.	
13	Ipswich Town	a.	
19	Luton Town	a.	
20	Leicester City	h.	
22	Luton Town	h.	
27			
May 4			

You can depend on TELEVISION CENTRE for

Television — V.H.F. Radio and Radiograms — Hi-Fi Equipment — Tape  
Recorders — STENOIRETTE Dictating Machines — Car Radio — Records  
and Record Players

## TELEVISION AND RECORD CENTRE

(TUMILTY ELECTRIC LTD.)

20 WENSUM STREET

62 ST. GILES STREET

NORWICH

Phone : 2 2 1 1 7 (Private branch ex.)



# EASTERN FOOTBALL NEWS

# THE PINK UN

- LEAGUE AND LOCAL RESULTS AND TABLES
- FULL REPORTS
- COMMENT AND CLUB VIEWPOINT

PRICE 2d.

ORDER YOUR COPY FROM ANY NEWSAGENT, OR BY POST (4d EACH ISSUE) FROM: SUBSCRIPTION DEPARTMENT, "EASTERN FOOTBALL NEWS," 57 LONDON STREET, NORWICH

## FOOTBALL LEAGUE (THIRD DIVISION SOUTH)

	P.	W.	D.	L.	Goals		Pts.
					F.	A.	
Torquay .....	18	10	5	3	38	28	25
Southampton .....	17	10	4	3	28	16	24
Colchester .....	18	9	4	5	40	25	22
Bournemouth .....	18	7	7	4	32	20	21
Newport .....	18	7	7	4	27	17	21
Brentford .....	18	9	3	6	40	33	21
Shrewsbury .....	18	5	10	3	19	25	20
Brighton .....	18	7	5	6	41	30	19
Gillingham .....	18	7	5	6	30	30	19
Watford .....	18	8	2	8	30	28	18
Reading .....	18	7	4	7	27	30	18
Crystal Palace .....	18	4	10	4	25	28	18
Queen's Park Rangers .....	18	7	4	7	22	25	18
Millwall .....	18	7	4	7	28	34	18
Northampton .....	18	6	5	7	29	24	17
Ipswich .....	18	7	3	8	31	27	17
Exeter .....	18	5	7	6	25	24	17
Coventry .....	18	6	5	7	25	29	17
NORWICH .....	17	5	6	6	20	22	16
Aldershot .....	18	6	3	9	34	43	15
Southend .....	18	4	5	9	26	32	13
Walsall .....	18	4	5	9	21	28	13
Swindon .....	18	5	2	11	26	45	12
Plymouth .....	18	3	5	10	16	37	11

For **QUALITY** in your Shopping Basket  
and **DIVIDENDS** in Your Purse

SHOP AT

27 GROCERY  
BRANCHES



FOR EVERYTHING

24 BUTCHERY  
BRANCHES



**Superior  
Sleeping  
Equipment**

FOR PERFECT REST — PULMAN-SPRUNG

**“SURE-O-SLEEP”**

MATTRESSES AND DIVANS

Manufactured by  
**EAST ANGLIAN BEDDING CO., KESGRAVE, IPSWICH**  
(Proprietor: E. C. PAGE)

**LIST OF APPEARANCES AND GOAL SCORERS**

	League and Cup		Combination			League and Cup		Combination	
	Apps.	Goals	Apps.	Goals		Apps.	Goals	Apps.	Goals
Applegate, P.	—	—	—	—	Heffer, R.	—	—	6	1
Ashman, R. G.	6	—	1	1	Hughes, E.	—	—	1	—
Bacon, R.	16	2	—	—	Hunt, R. A.	16	6	—	—
Bannister, K.	—	—	14	1	Jermy, P.	—	—	1	—
Barry	—	—	1	1	Kitchener, R.	9	—	—	—
Bayliss, J.	—	—	3	1	Laskey, R.	—	—	10	3
Billington, C.	7	—	5	1	Lockwood, R.	17	—	—	—
Bly, T. G.	2	—	8	2	McCrohan, R.	17	—	—	—
Buchanan, C.	1	—	1	—	McNeil, M.	17	1	—	—
Bullimore, A.	—	—	11	—	Nethercott, K.	—	—	14	—
Butler, J.	—	—	6	—	Nobbs, A. W.	—	—	—	—
Cole, M.	—	—	5	—	Oxford, K.	17	—	—	—
Chung, C.	1	—	4	1	Penman, W. D.	—	—	—	—
Coxon, W. G.	2	—	4	1	Pointer, R.	7	—	8	—
Dixon, T.	—	—	2	—	Rayner, R.	—	—	—	—
Eastall, J.	—	—	—	—	Rule, A.	3	—	1	—
Englefield, G.	11	—	3	—	Savino, R.	—	—	1	—
Gavin, J.	16	7	—	—	Smith, K. G.	—	—	1	—
Gilbert, N.	—	—	6	—	Spelman, R.	—	—	7	2
Gordon, P.	16	4	1	—	Stenner, A.	6	—	6	1
Greatrex, J.	—	—	—	—	Thurlow, B.	—	—	14	—
Hargreaves, A.	—	—	4	1	Wilson, J. C.	—	—	5	—

**SPORTS QUIZ ANSWERS**

- |                        |                                 |
|------------------------|---------------------------------|
| 1. Six                 | 5. Germany                      |
| 2. U.S.A.              | 6. 26                           |
| 3. Shrewsbury          | 7. Leyton O., Southend, Swindon |
| 4. Did 6 ft. high jump | 8. Peter Doherty                |

*Stanley Matthews, most brilliant footballer of the age, has helped the Co-op to design the ideal Football Boots.*

Obtainable only at **FOOTWEAR DEPARTMENT**

IDEAL  
BIRTHDAY  
PRESENTS



CERTAIN  
TO SCORE  
WITH HIM





## START RIGHT ON C.T.S.

"C.T.S." Batteries, Ready Charged, Guaranteed, 6 volt, from £3 15s., 12 volt, £5 5s., Exchange. Just ring, we deliver and fit immediately.

FOR THE CYCLIST we offer TYRES at 9/11d., Tubes 3/11d. 24 x 1 $\frac{1}{8}$ , 26 x 1 $\frac{1}{8}$ , 26 x 1 $\frac{1}{4}$ , 26 x 1 $\frac{1}{2}$  28 x 1 $\frac{1}{2}$ . Free Delivery Saturday Mornings. C.O.D. Order by Postcard.

**C.T.S., 66 ST. GILES STREET  
NORWICH. Tel. : 22429**

### HALF-TIME SCOREBOARD

<b>A</b>	BRIGHTON RES. NORWICH CITY RES.	<b>N</b>	BOLTON WANDERERS MANCHESTER UTD.
<b>B</b>	COLCHESTER UTD. GILLINGHAM	<b>O</b>	EVERTON PORTSMOUTH
<b>C</b>	COVENTRY CITY BRENTFORD	<b>P</b>	LEEDS UNITED SHEFFIELD WED.
<b>D</b>	CRYSTAL PALACE SHREWSBURY	<b>Q</b>	LUTON TOWN PRESTON NORTH END
<b>E</b>	EXETER CITY WATFORD	<b>R</b>	SUNDERLAND CHELSEA
<b>F</b>	NEWPORT COUNTY BRIGHTON and HOVE	<b>S</b>	TOTTENHAM NEWCASTLE UTD.
<b>G</b>	NORTHAMPTON IPSWICH TOWN	<b>T</b>	WOLVERHAMPTON ARSENAL
<b>H</b>	PLYMOUTH ARGYLE TORQUAY UTD.	<b>U</b>	BARNSELY HUDDERSFIELD
<b>I</b>	QUEEN'S PARK R. BOURNEMOUTH	<b>V</b>	BRISTOL CITY GRIMSBY TOWN
<b>J</b>	READING MILLWALL	<b>W</b>	FULHAM LEICESTER CITY
<b>K</b>	SOUTHAMPTON ALDERSHOT	<b>X</b>	NOTTS FOREST MIDDLESBROUGH
<b>L</b>	SOUTHEND UTD. WALSALL	<b>Y</b>	PORT VALE LEYTON ORIENT
<b>M</b>	BLACKPOOL WEST BROMWICH	<b>Z</b>	WEST HAM UTD. STOKE CITY

football fans read

# NEWS OF THE WORLD

expert reports





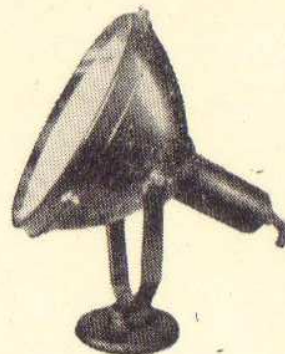
**Norwich City F.C. chooses**



# Floodlights

Floodlit Football has come to stay—the sporting world has acclaimed this innovation, and Norwich City Football Club, like many other leading clubs have wisely chosen REVO Floodlights to illuminate their ground.

The Revo Staff of Lighting Engineers is available for assistance in the preparation of floodlighting schemes or for submitting detailed proposals without obligation.



Typical examples from the wide range of R E V O Floodlights.

**REVO ELECTRIC CO., LIMITED, TIPTON, STAFFS.**

*Manufacturers of—Public and Industrial Lighting, Switch and Fusegear, Cookers and Domestic Appliances, Fans, etc.*

---

## **FITT BROS. LIMITED**

★ Smart Wedding Cars for Hire  
(Satisfaction Guaranteed)

★ Reliable Taxi Service  
FUNERAL CAR PROPRIETORS

★ Furniture Removals  
(Experienced Packers)

Cartage Contractors

Dry Storage Accommodation

*Established 1868*

Tel.: NORWICH 20127

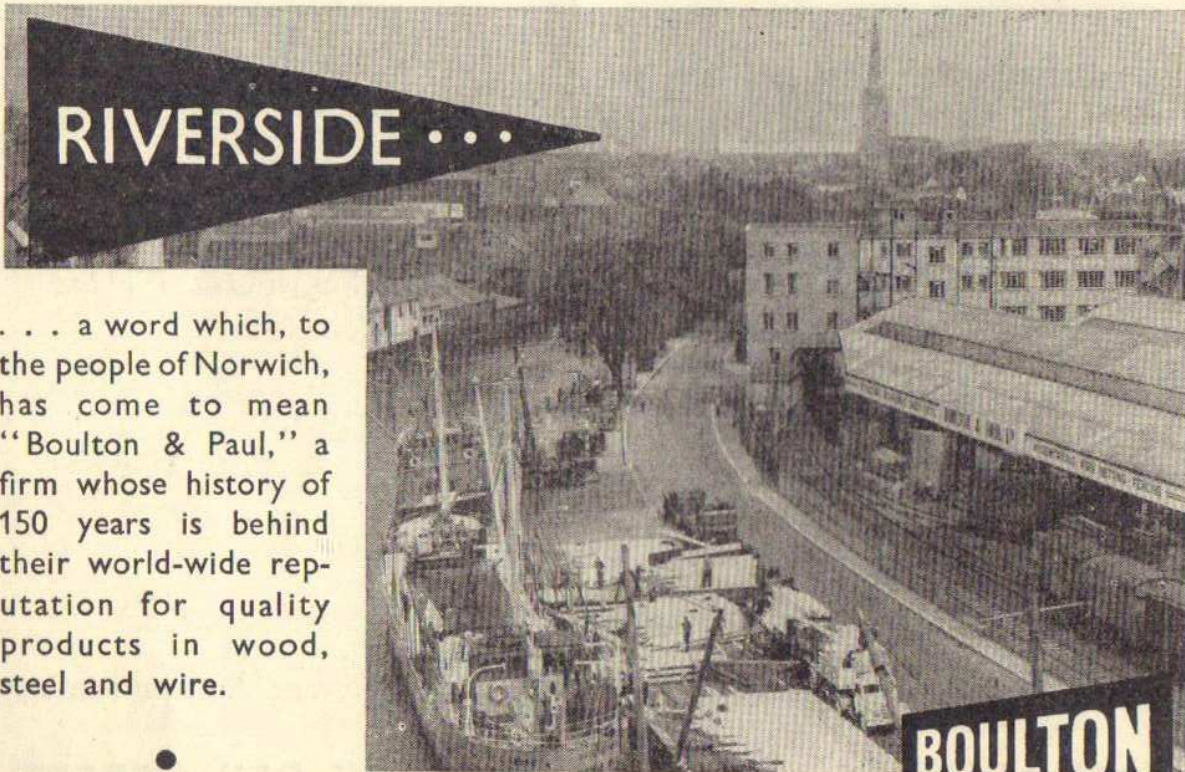
**67 BER STREET  
NORWICH**

---





*R. G. CARTER LIMITED, DRAYTON, NORWICH*  
*Tel. Drayton 355 (5 lines)*



. . . a word which, to the people of Norwich, has come to mean "Boulton & Paul," a firm whose history of 150 years is behind their world-wide reputation for quality products in wood, steel and wire.



STRUCTURAL ENGINEERING . WOODWORKING . WIRE NETTING  
CHAIN LINK . FENCING AND GATES . SHEET-METAL WORK

**BOULTON  
AND PAUL**